

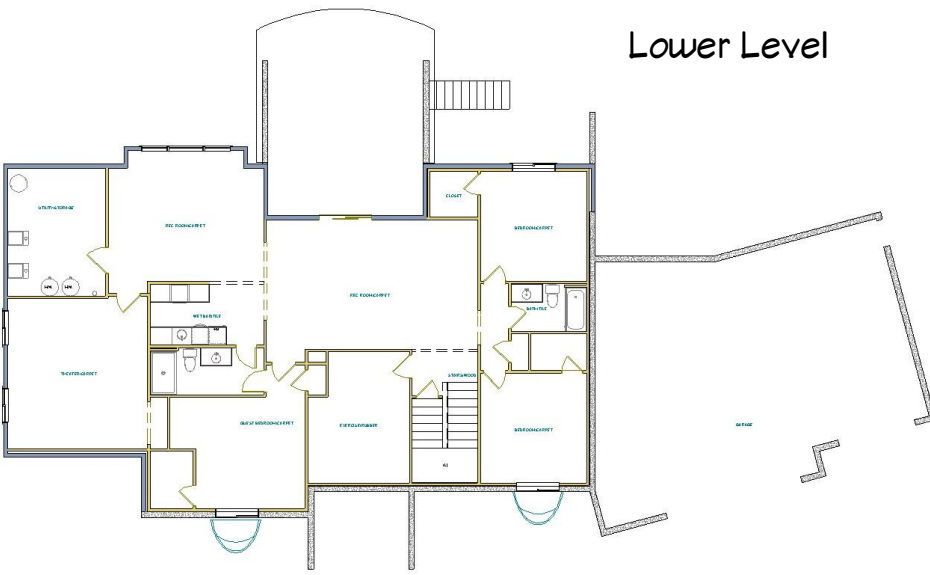
The Pikes Peak Plan #104



Main Level



Lower Level



The Pikes Peak plan is a large opening plan designed to take advantage of the incredible views that Colorado offers. This home features a main level master with either a study/bedroom option, connected laundry to master closet. Open kitchen/dining/great room with 12' ceilings in the great room (with main level 10' ceilings option)

The lower level features an additional 2 bedrooms with shared bath and a lower level master suite with connected bath. Rec room, pool table room, wet bar and theatre finish out the lower level.

The real gem is the wrap around deck/patio which are sure to please the outdoor lover.

An oversized 3 car garage is the final item of note.

Contact us today about building this plan on your lot or one of ours.

5 Beds/5 Baths/Dining

Main Level—2527 SF

Lower Level—2234 SF Finished

Garage—992 SF

Covered Porches—780 SF

Contact: 719-347-1480
jeff@jshomesinc.com
www.JSHomesInc.com

Plans and Specifications Subject to Change