

The Lincoln Peak Plan #109



JS Homes Inc

Real Estate | Design | Build



The Lincoln Peak Plan was developed for our owners looking for a smaller space but still want to enjoy all the great JS Homes quality and features.

This home features 2 bedrooms on the main level, with an open concept living and kitchen area. Large covered deck/patio and study round out the main level features.

The lower level features another 3 bedrooms, 2 with a jack/jill bath, recreation room with wet bar and exercise room.

An oversized 5 car garage rounds out the incredible features in this smaller spaced home.

Pricing starting at \$635,650.00

Contact us today about building this plan on your lot or one of ours.

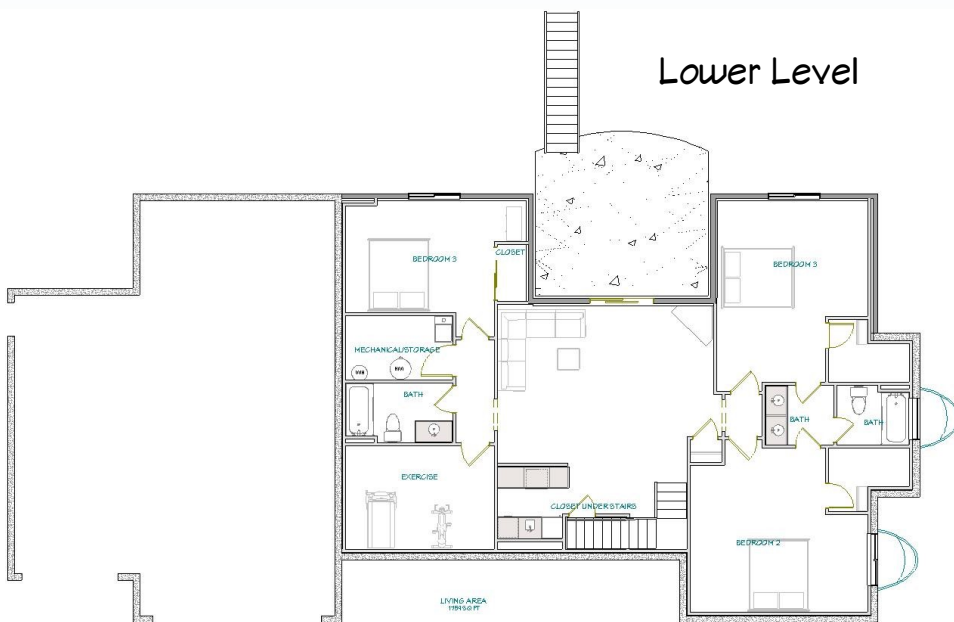
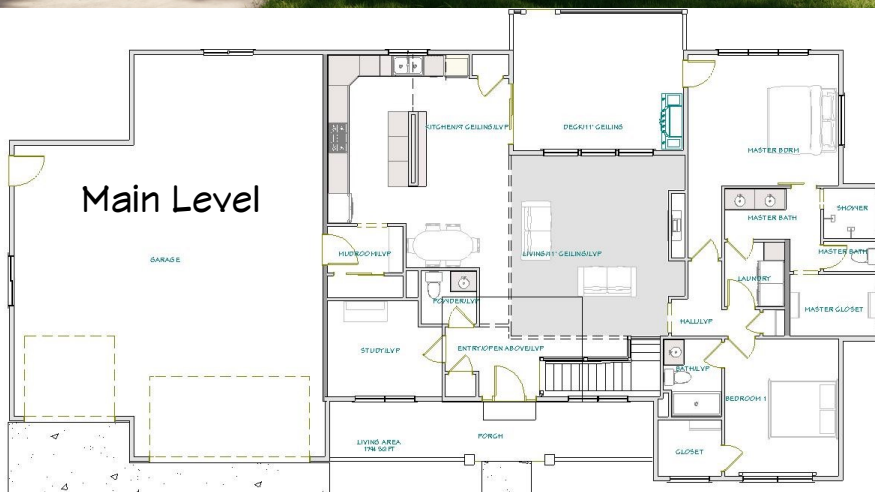
5 Beds/4 baths/Study

Main Level—1794 SF

Lower Level—1760 SF Finished

Garage—1080 SF

Covered Porches—430 SF



Contact: 719-347-1480
 jeff@jshomesinc.com
 www.JSHomesInc.com

Pricing, Plans and Specifications Subject to Change, Pricing does not include Homesite