

The Long's Peak Plan #105



The Long's Peak Plan is a beautiful open concept plan with large kitchen, great room with raised ceilings and private dining room.

The main level master features a spa like bathroom with private (optional) hot tub patio. Large closet connected to the laundry room is a JS Homes feature.

With a study and guest bedroom the main level has over 2400 sf of living space.

The lower level features two additional bedrooms, rec room, wet bar and theatre space.

The garage is a massive 4 car unit with 18' wide doors.

Pricing starting at \$875,000.00

Contact us today about building this plan on your lot or one of ours.

5 Beds/4 Baths/Study

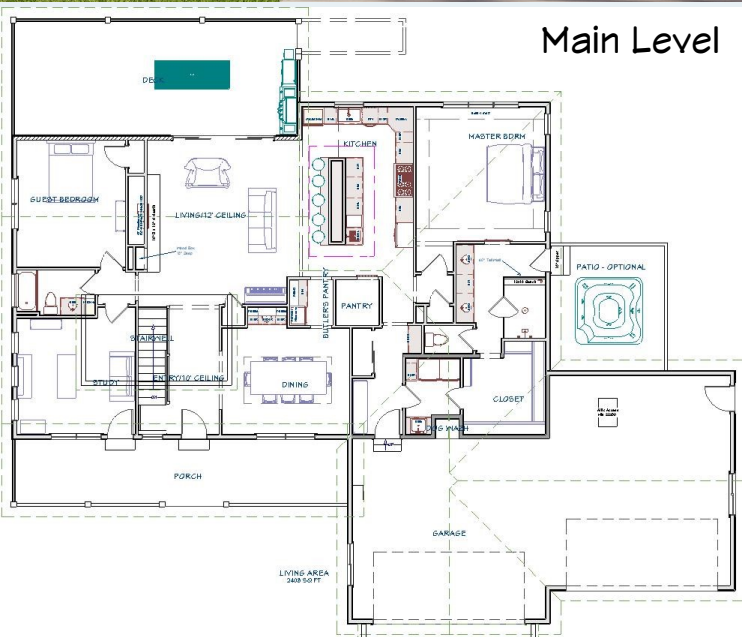
Main Level—2430 SF

Lower Level—2326 SF Finished

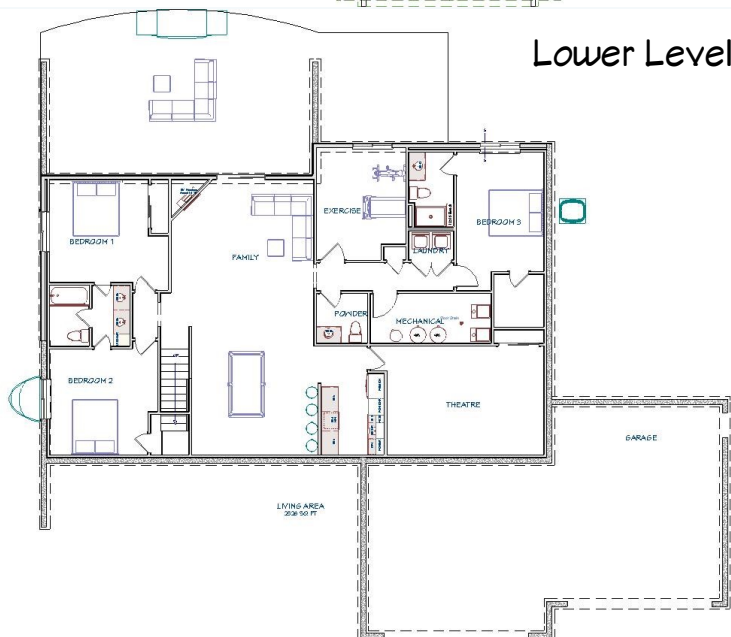
Garage—1000 SF

Covered Porches—340 SF

Contact: 719-347-1480
jeff@jshomesinc.com
www.JSHomesInc.com



Main Level



Lower Level