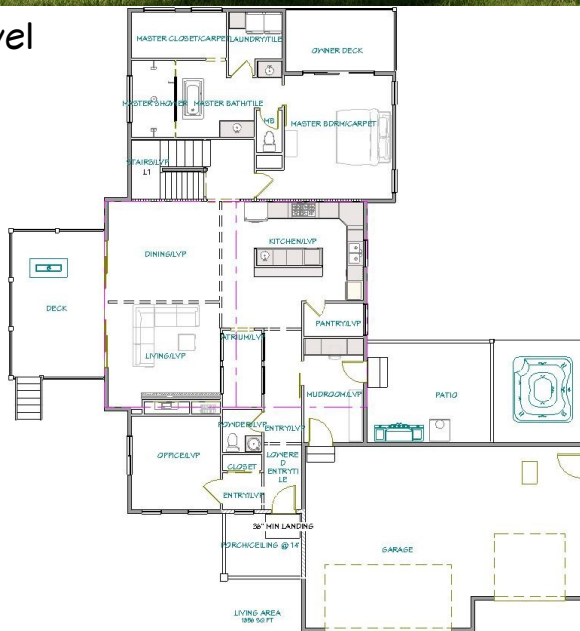


# The Shavano Plan #110



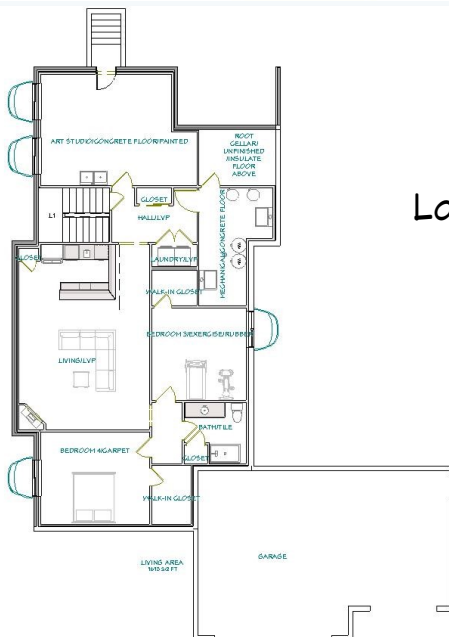
Main Level



Upper Level



Lower Level



The Shavano Plan is the Parade of Homes entry for 2021.

Designed in a European Modern style—this home features wonderful living space, vaulted ceilings, private master retreat and a lower level art studio with own entry.

The Shavano was designed for our clients who wished to bring the outdoors in, and features a indoor atrium.

Pricing starting at \$835,000.00

Contact us today about building this plan on your lot or one of ours.

5 Beds/4 Baths/Study

Main Level—1856 SF

Lower Level—1615 SF Finished

Upper Level—645 SF

Garage—796SF

Covered Porches—755 SF

Contact: 719-347-1480  
[jeff@jshomesinc.com](mailto:jeff@jshomesinc.com)  
[www.JSHomesInc.com](http://www.JSHomesInc.com)