

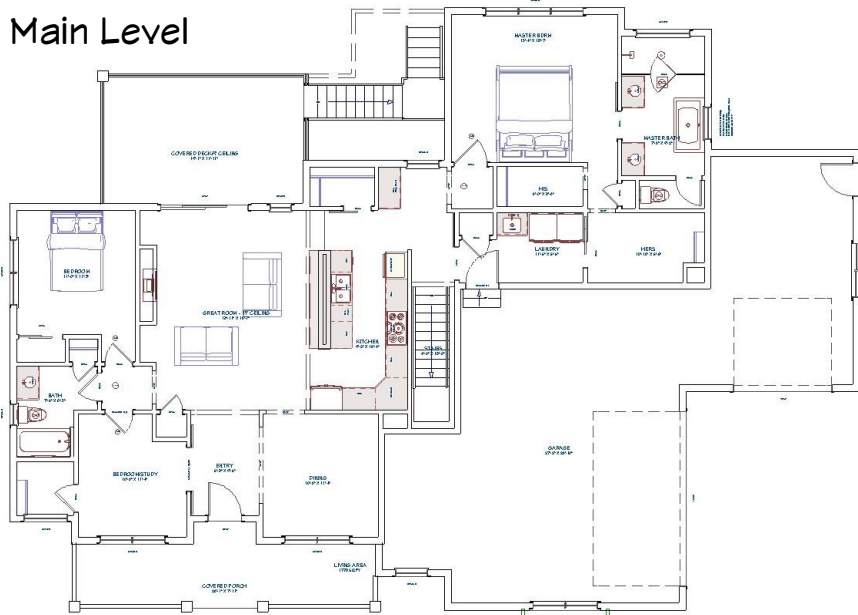
# The Oxford Plan #112



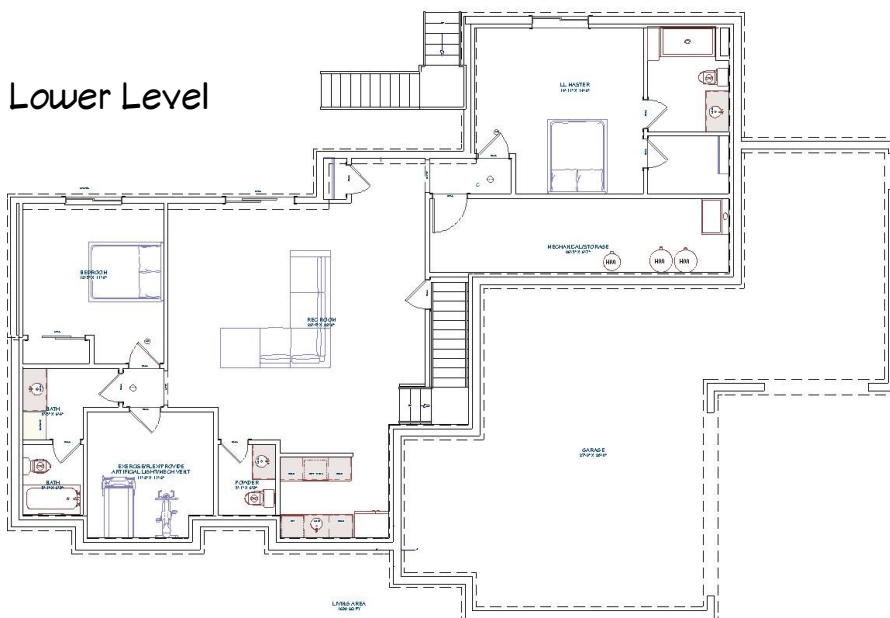
**JS Homes Inc**

Real Estate | Design | Build

## Main Level



## Lower Level



A new family plan—The Oxford is for many different family situations. With formal dining, study and guest bedroom on main level, large rec space, drop area and spacious master suite—this home will be a winner for all. The large oversized garage will provide shop space for do it yourself's and the lower level features an exercise space, bedroom and lower level master suite. The lower level recreation room and wet bar finish off the many living spaces in this home. We are proud to present The Oxford and know it will fill the needs of many different family size. It retains all the great JS Homes upgrades our clients have come to expect.

Pricing starting at 825,000.00

5 Beds/5 Baths/Dining

Main Level—1776 SF

Lower Level—1760 SF

Garage—950 SF (3 Car)

Covered Porches—425 SF

Contact: 719-347-1480  
[jeff@jshomesinc.com](mailto:jeff@jshomesinc.com)  
[www.JSHomesInc.com](http://www.JSHomesInc.com)